

Overseas clients

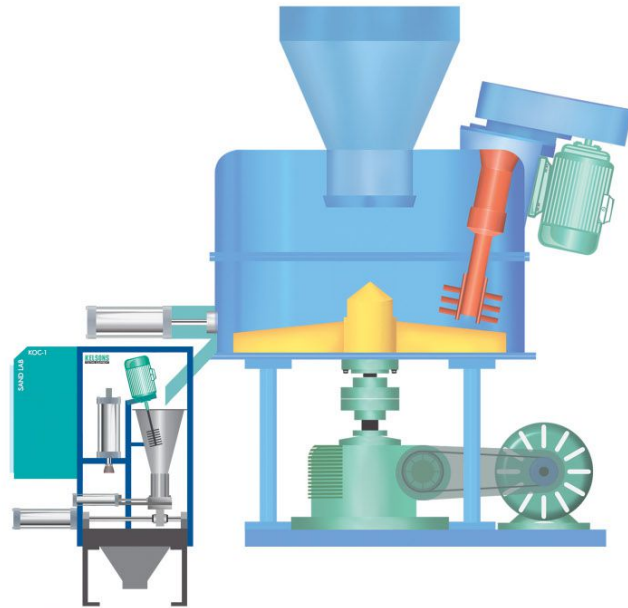


- Malaysia
- Syria
- Dubai
- Iran
- Saudi Arabia
- Thailand
- Egypt
- Uganda
- Germany
- Baharin
- Turkey
- South Korea
- Bangladesh
- Nigeria
- Oman
- South Africa
- Croatia
- Finland
- Vietnam

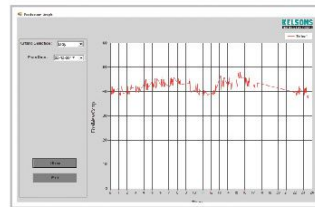
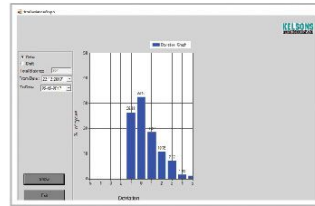
ONLINE SAND CONTROL SYSTEM - KOC



## Sand Quality is key of Quality Casting



KOC With Sand Mixer



- ▶ Consistency in compactibility in each and every batch
- ▶ Reduce rejection
- ▶ Reduce sand drop
- ▶ Reduce sand wash
- ▶ Reduce mould breakage
- ▶ Improvement of casting surface finish
- ▶ Fetting time reduce

- ▶ Shot blasting time reduce
- ▶ Reduce consumption of shots due to less shot blasting time
- ▶ Directing saving in weight variation
- ▶ Material consumption record of each batch, (Sand, Bentonite, Coal dust...)
- ▶ Perfect controlling of additives
- ▶ Get unlimited data of each and every batch
- ▶ Production data of shift and period wise

- ▶ Production calculator in data management system
- ▶ Reduce operator fatigue
- ▶ No skill operator required
- ▶ Supervisory control from PC
- ▶ All type of alarm display – Breakdown time reduce
- ▶ Very less wear out part
- ▶ Easy to maintenance
- ▶ All bought out part available in Indian market

## Technical Overview



### Robust sand testing unit

- ▶ Pneumatic operated sand sampling unit with mixer tank plug which will mounting on mixer tank.
- ▶ One sand testing unit with branded components for precision measurement of compactibility
- ▶ Inbuilt sand aeration unit for lump free sand sampling.
- ▶ It is completely enclosed by a cover with outlet chute at bottom for sand discharge.



### Precision water dosing system

- ▶ Branded water meter for precision measurement of water quantity.
- ▶ Install 'NO' and 'NC' Water valve for continuous water circulation constant water flow.
- ▶ Water strainer for removing measure contamination in water.



### PLC Base control panel

- ▶ One electrical control panel with branded PLC for better performance.
- ▶ Existing additive control by PLC (Bentonite, Coal dust, Fine dust...)
- ▶ One HMI for parameter setting and alarm.
- ▶ All necessary interlock between sand plant and KOC panel.
- ▶ All necessary cable with plug between mechanical unit and control panel.



### Computer with supervisory software

- ▶ Branded PC with related operating system.
- ▶ Scada for easy control and supervision.
- ▶ 50 different recipe
- ▶ G.C.S. Measure and control (Model KOC-2)
- ▶ Historical data log like... Day, Time, Cycle no, Sand temperature,
- ▶ Water quantity, Compactibility,....
- ▶ Graphical representation of compactibility.
- ▶ Historical alarm buffer for easy diagnosis.
- ▶ Transfer all recorded data to flash drive or other computer.